

pattern #5152400876765184, created Dec 24, 2017

Copyright © by Thread Bare, licensed to: www.thread-bare.com, Calgary

Pattern size 198w x 160h stitches in 35 dmc Colors

Estimated completed dimensions:

14.25" x 11.50" inches on 14 Aida fabric

12.50" x 10.00" inches on 16 Aida fabric

11.00" x 9.00" inches on 18 Aida fabric

10.00" x 8.00" inches on 20 Aida fabric

9.00" x 7.25" inches on 22 Hardanger fabric

8.00" x 6.50" inches on 25 Evenweave fabric

7.00" x 5.75" inches on 28 Evenweave fabric

NOTE: We recommend adding at least 2 inches to each edge to allow for mounting the piece in a frame



Thread Bare

email: stitching@thread-bare.com

website: <https://www.thread-bare.com>

Instructions

The index sheet shows the location of each page of the pattern against the image. Most people either start at the top left of the fabric and pattern or match up the middle of the fabric with the middle of the pattern - this is marked on the pattern with the red and blue lines. If you fold your material in half, the folds will be along the red and blue lines and where they cross is the center-point of the pattern and material.

Whichever system you chose, remember to measure carefully, then measure it again to be sure so that you are confident that the image is going to be positioned correctly before you begin your stitching.

As well as the index sheet, each page of the pattern also shows the rows and columns of stitches in numbered groups of 10. Some patterns have a few stitches from the previous block to the left or top of the each page repeated and these are shaded in grey. These are just there to help you line up your work when starting a new page and should not be stitched twice. The end of each page also point to the page where the pattern continues (apart from the edges of the pattern).

The number of strands of floss to use will depend on the fabric you are using and your own personal preferences. We've provided examples of coverage using various thread counts on our website: <https://www.thread-bare.com/2017/04/29/examples-of-coverage-across-different-thread-counts>

The estimated fabric sizes are based on the finished stitched picture area and are based on stitching "over one" across your design. You should allow an additional 2-3 inches along each edge of your fabric to provide the extra material needed for framing.

This chart is provided by <https://www.thread-bare.com> for personal use only and is not for resale. It should not be copied or shared in any way except by linking to our website.

We hope you enjoy this pattern and would love to see pictures of your completed work or work-in-progress as you go. Please send any feedback or suggestions to stitching@thread-bare.com and be sure to like and follow us on Facebook for future designs.

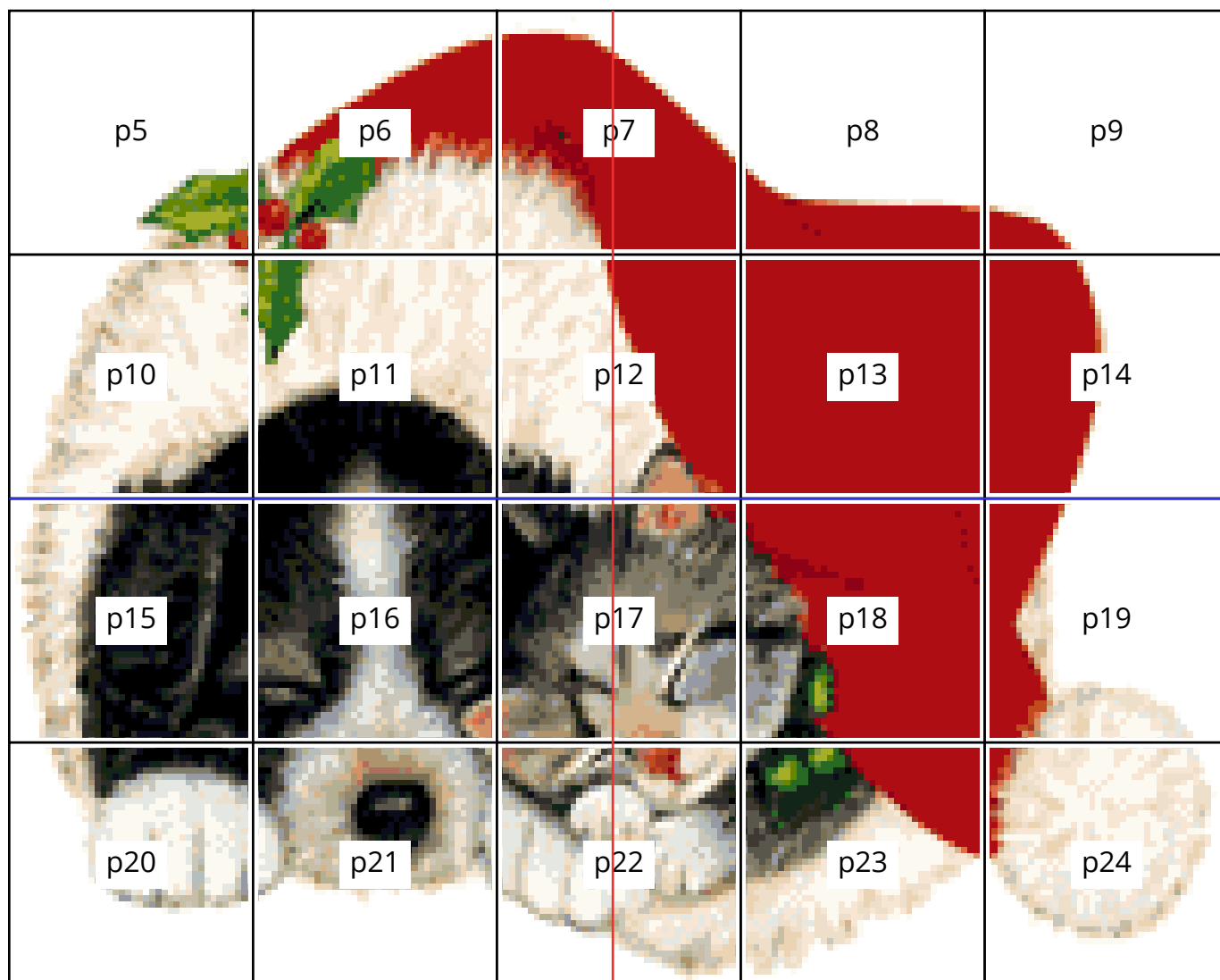
<https://www.facebook.com/threadbarestitching/>

Thread Chart

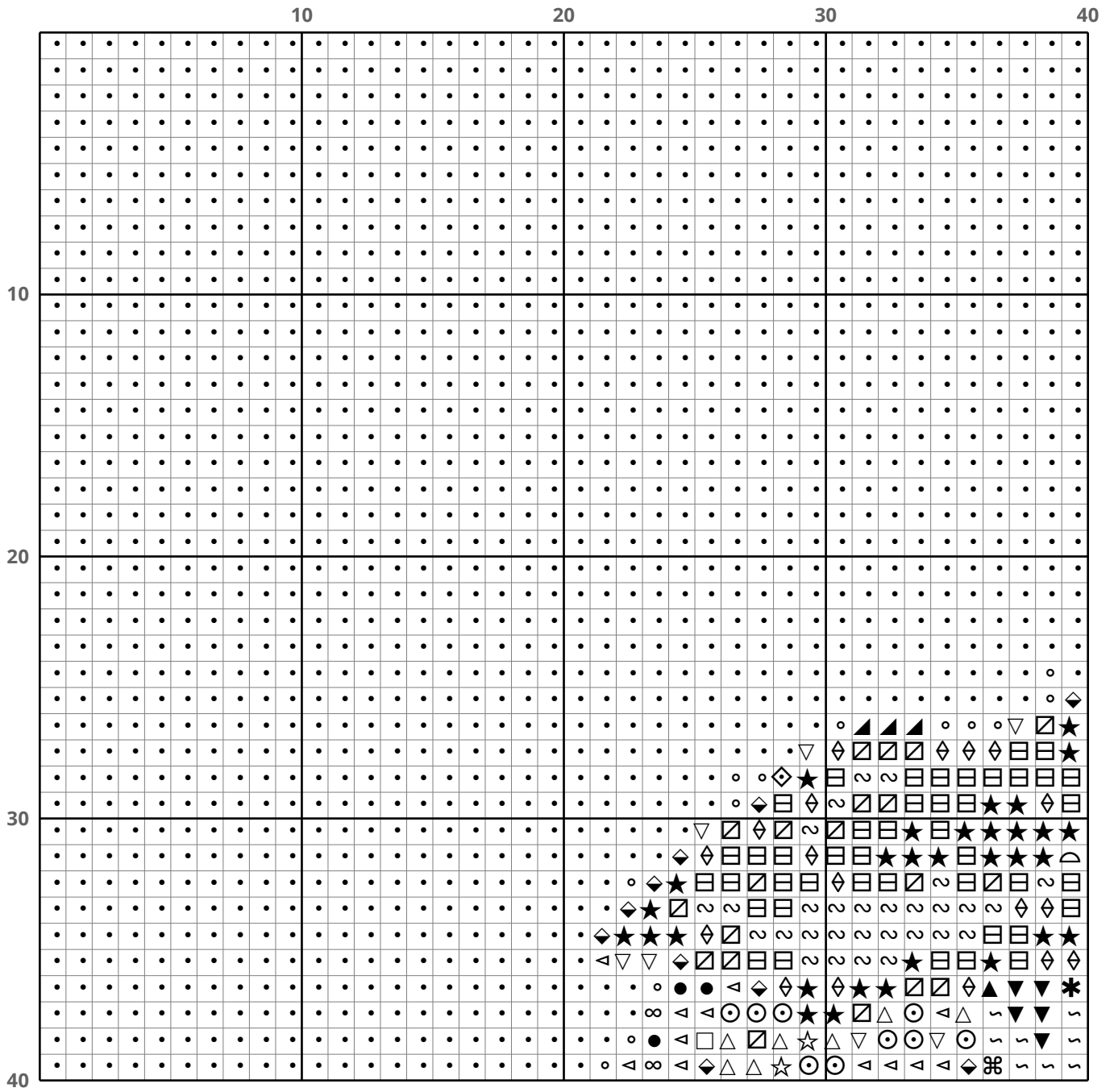
symbol	dmc code / name	stitches	estimated skeins (using strands / fabric count)							
			2/14	2/16	2/18	2/20	2/22	2/25	1/25	1/28
	168 - V LT Pewter	214	0.25	0.25	0.25	0.25	0.25	0.25	0.25	0.25
	310 - Black	1,436	1.00	0.75	0.75	0.75	0.75	0.50	0.25	0.25
	318 - LT Steel Gray	341	0.25	0.25	0.25	0.25	0.25	0.25	0.25	0.25
	402 - V LT Mahogany	148	0.25	0.25	0.25	0.25	0.25	0.25	0.25	0.25
	500 - V DK Blue Green	395	0.25	0.25	0.25	0.25	0.25	0.25	0.25	0.25
	524 - V LT Fern Green	400	0.25	0.25	0.25	0.25	0.25	0.25	0.25	0.25
	606 - Bright Orange-Red	6,272	3.75	3.25	2.75	2.50	2.25	2.00	1.00	1.00
	612 - LT Drab Brown	234	0.25	0.25	0.25	0.25	0.25	0.25	0.25	0.25
	640 - V DK Beige Gray	232	0.25	0.25	0.25	0.25	0.25	0.25	0.25	0.25
	642 - DK Beige Gray	296	0.25	0.25	0.25	0.25	0.25	0.25	0.25	0.25
	644 - MD Beige Gray	487	0.50	0.25	0.25	0.25	0.25	0.25	0.25	0.25
	645 - V DK Beaver Gray	607	0.50	0.50	0.50	0.25	0.25	0.25	0.25	0.25
	646 - DK Beaver Gray	442	0.25	0.25	0.25	0.25	0.25	0.25	0.25	0.25
	700 - Bright Green	215	0.25	0.25	0.25	0.25	0.25	0.25	0.25	0.25
	702 - Kelly Green	64	0.25	0.25	0.25	0.25	0.25	0.25	0.25	0.25
	703 - Chartreuse	49	0.25	0.25	0.25	0.25	0.25	0.25	0.25	0.25
	712 - Cream	1,271	0.75	0.75	0.75	0.50	0.50	0.50	0.25	0.25
	738 - V LT Tan	262	0.25	0.25	0.25	0.25	0.25	0.25	0.25	0.25
	739 - Ultra V LT Tan	687	0.50	0.50	0.50	0.50	0.25	0.25	0.25	0.25
	817 - V DK Coral Red	134	0.25	0.25	0.25	0.25	0.25	0.25	0.25	0.25
	844 - Ultra DK Beaver Gray	500	0.50	0.25	0.25	0.25	0.25	0.25	0.25	0.25
	900 - DK Burnt Orange	99	0.25	0.25	0.25	0.25	0.25	0.25	0.25	0.25
	906 - MD Parrot Green	103	0.25	0.25	0.25	0.25	0.25	0.25	0.25	0.25
	907 - LT Parrot Green	76	0.25	0.25	0.25	0.25	0.25	0.25	0.25	0.25
	934 - Black Avocado Green	396	0.25	0.25	0.25	0.25	0.25	0.25	0.25	0.25
	939 - V DK Navy Blue	650	0.50	0.50	0.50	0.50	0.25	0.25	0.25	0.25
	946 - MD Burnt Orange	135	0.25	0.25	0.25	0.25	0.25	0.25	0.25	0.25
	3024 - V LT Brown Gray	658	0.50	0.50	0.50	0.50	0.25	0.25	0.25	0.25
	3340 - MD Apricot	90	0.25	0.25	0.25	0.25	0.25	0.25	0.25	0.25
	3756 - Ultra V LT Baby Blue	723	0.50	0.50	0.50	0.50	0.50	0.25	0.25	0.25
	3770 - V LT Tawny	1,586	1.00	1.00	0.75	0.75	0.75	0.50	0.25	0.25
	3778 - LT Terra Cotta	115	0.25	0.25	0.25	0.25	0.25	0.25	0.25	0.25
	3799 - V DK Pewter Gray	459	0.50	0.25	0.25	0.25	0.25	0.25	0.25	0.25
	3865 - Winter White	2,255	1.50	1.25	1.00	1.00	1.00	0.75	0.50	0.50
	B5200 - Snow White	9,649	5.50	4.75	4.25	4.00	3.50	3.25	1.75	1.50

Index Sheet

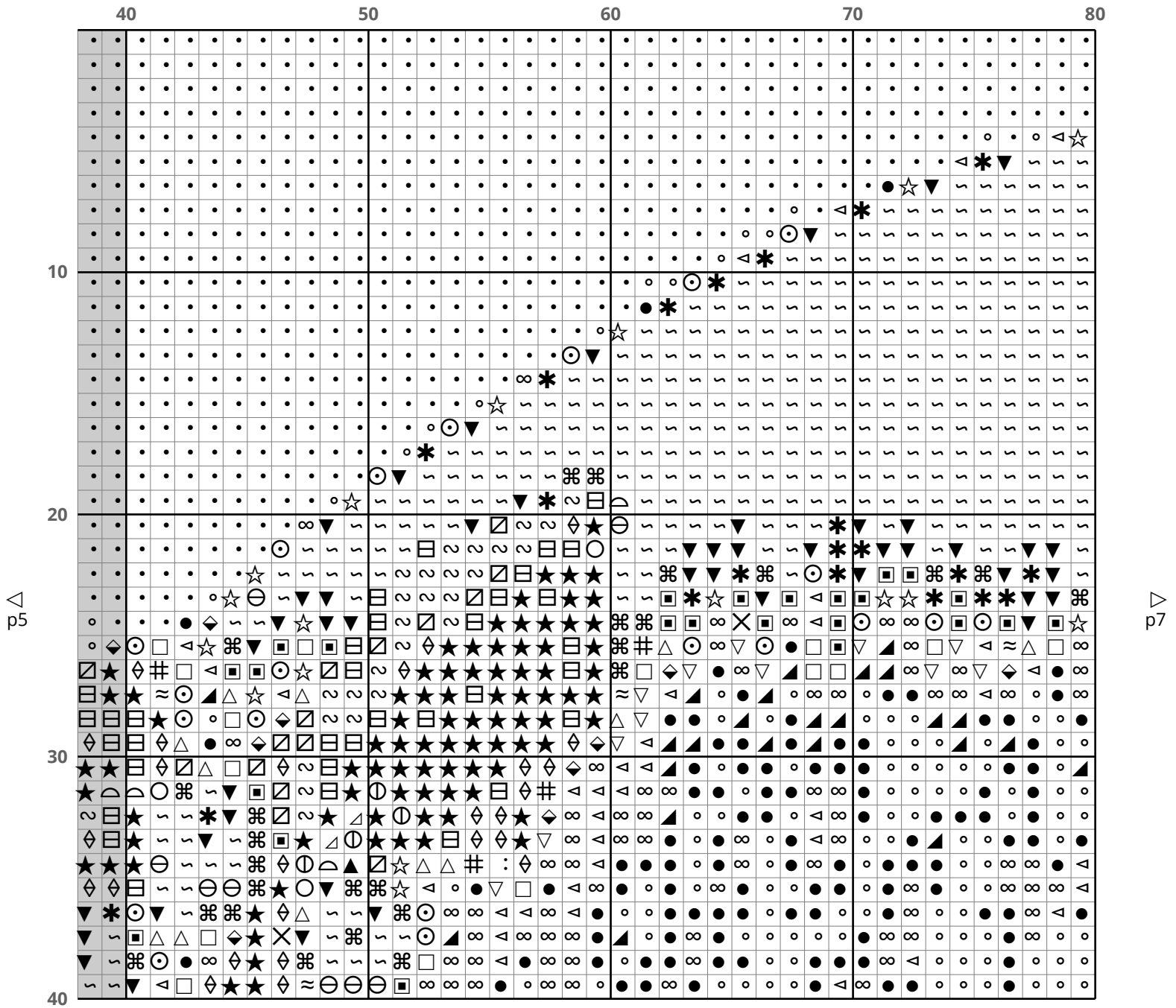
Position of pattern pages relative to image

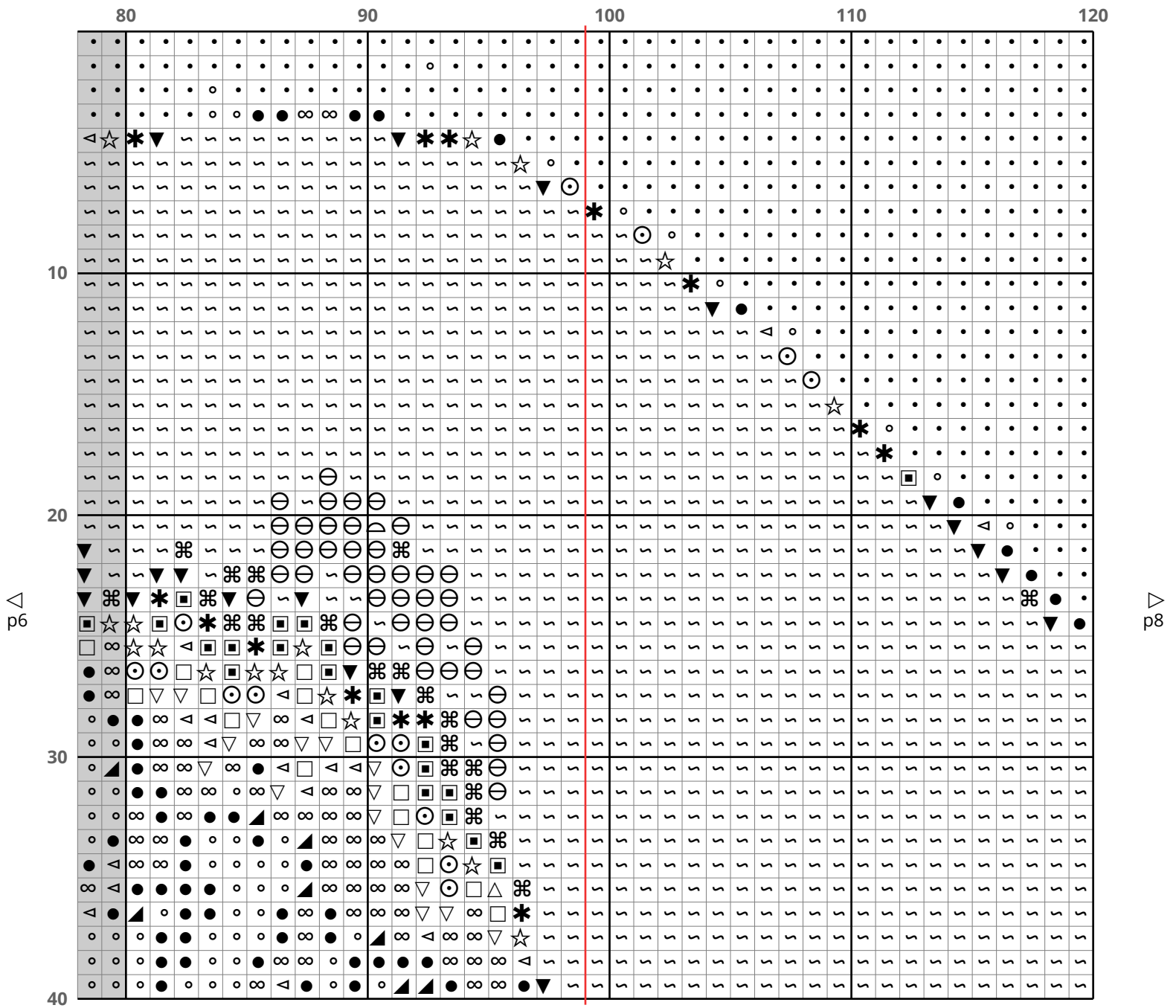


NOTE: red and blue lines mark the horizontal and vertical center of the pattern to assist with layout on the fabric



▽
p6





120

130

140

150

160

10

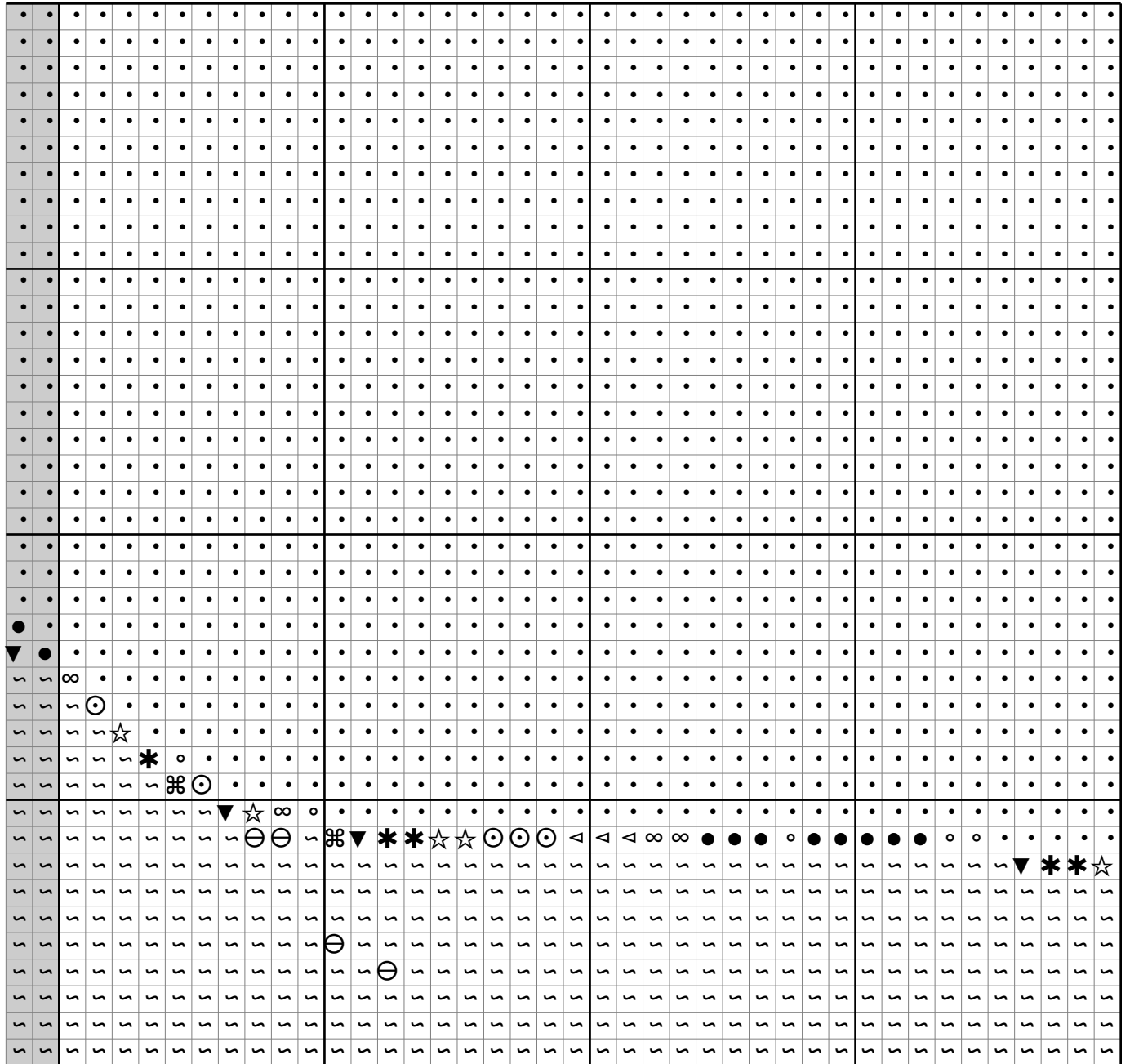
20

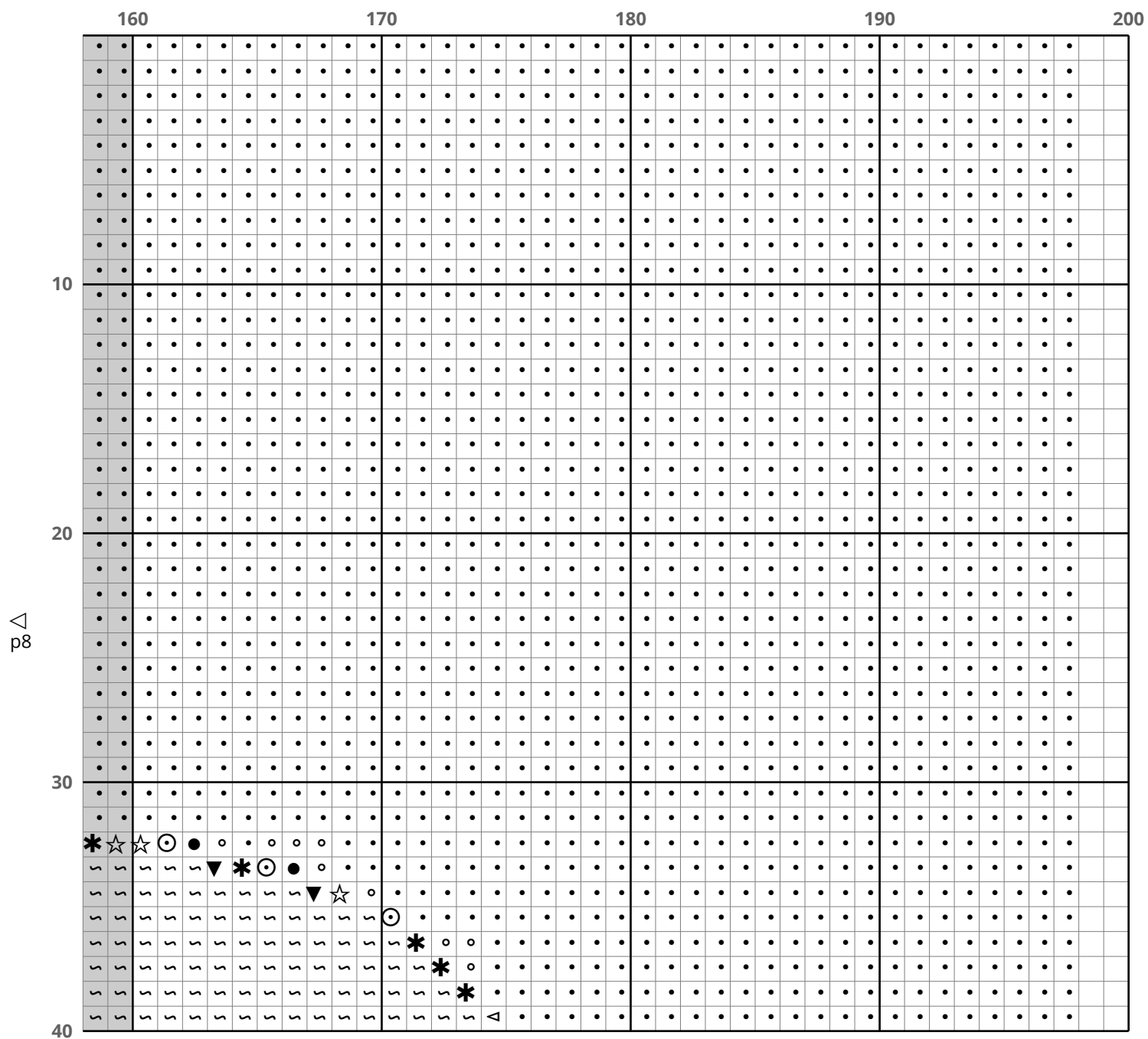
30

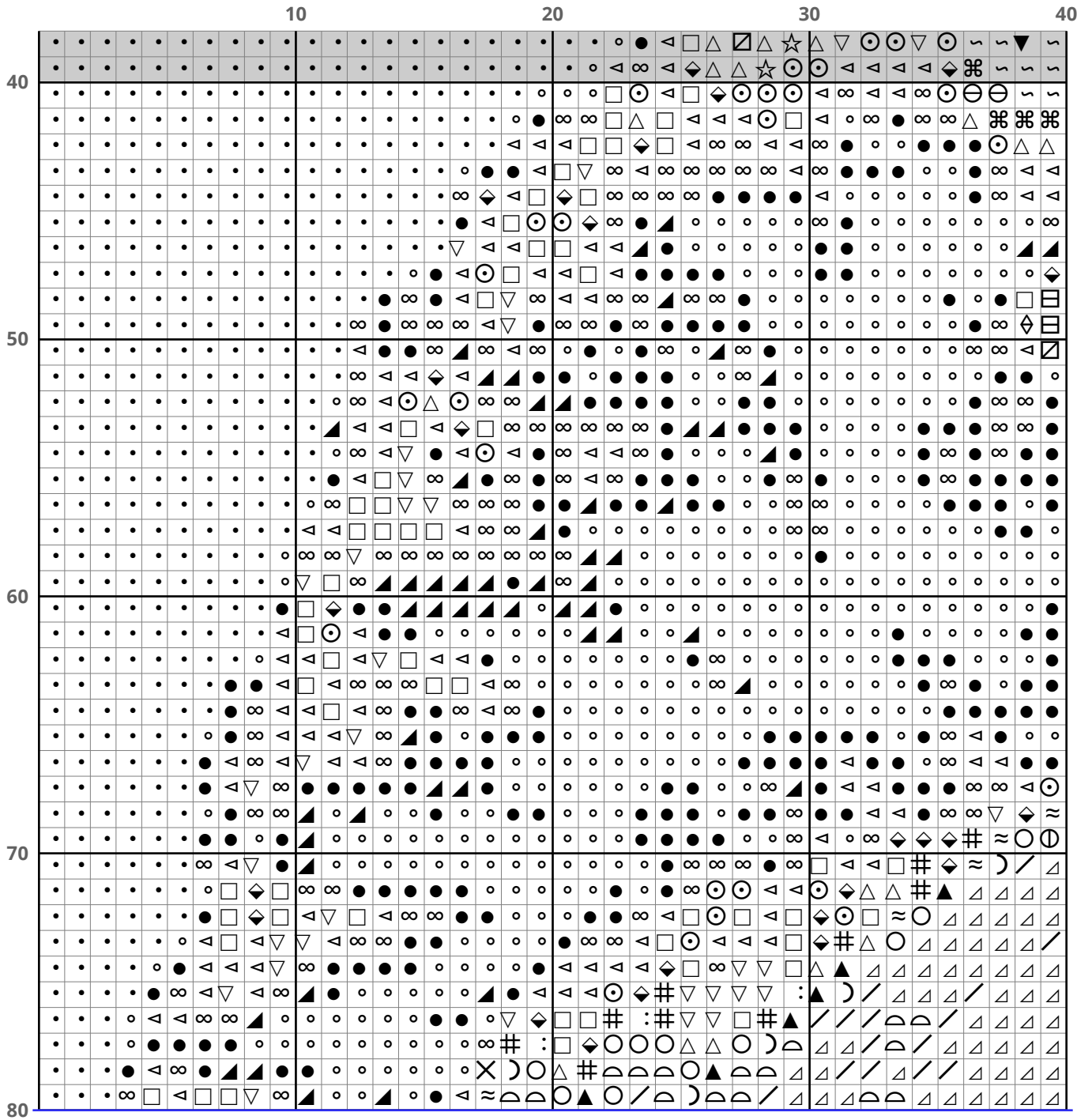
40

△
p7

△
p9







80

90

100

110

120

40

50

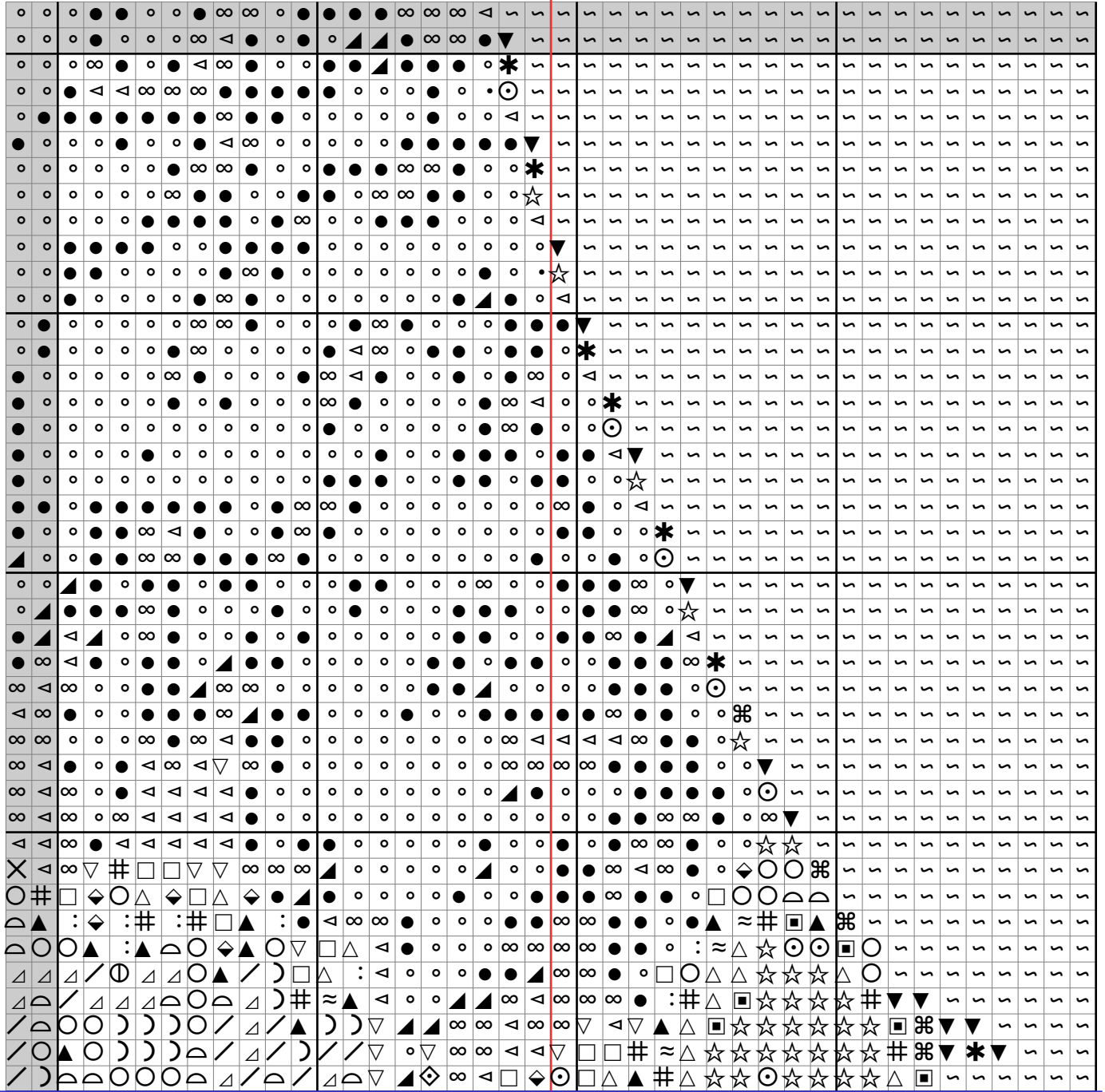
60

70

80

p11

p13



120

130

140

150

160

40

50

60

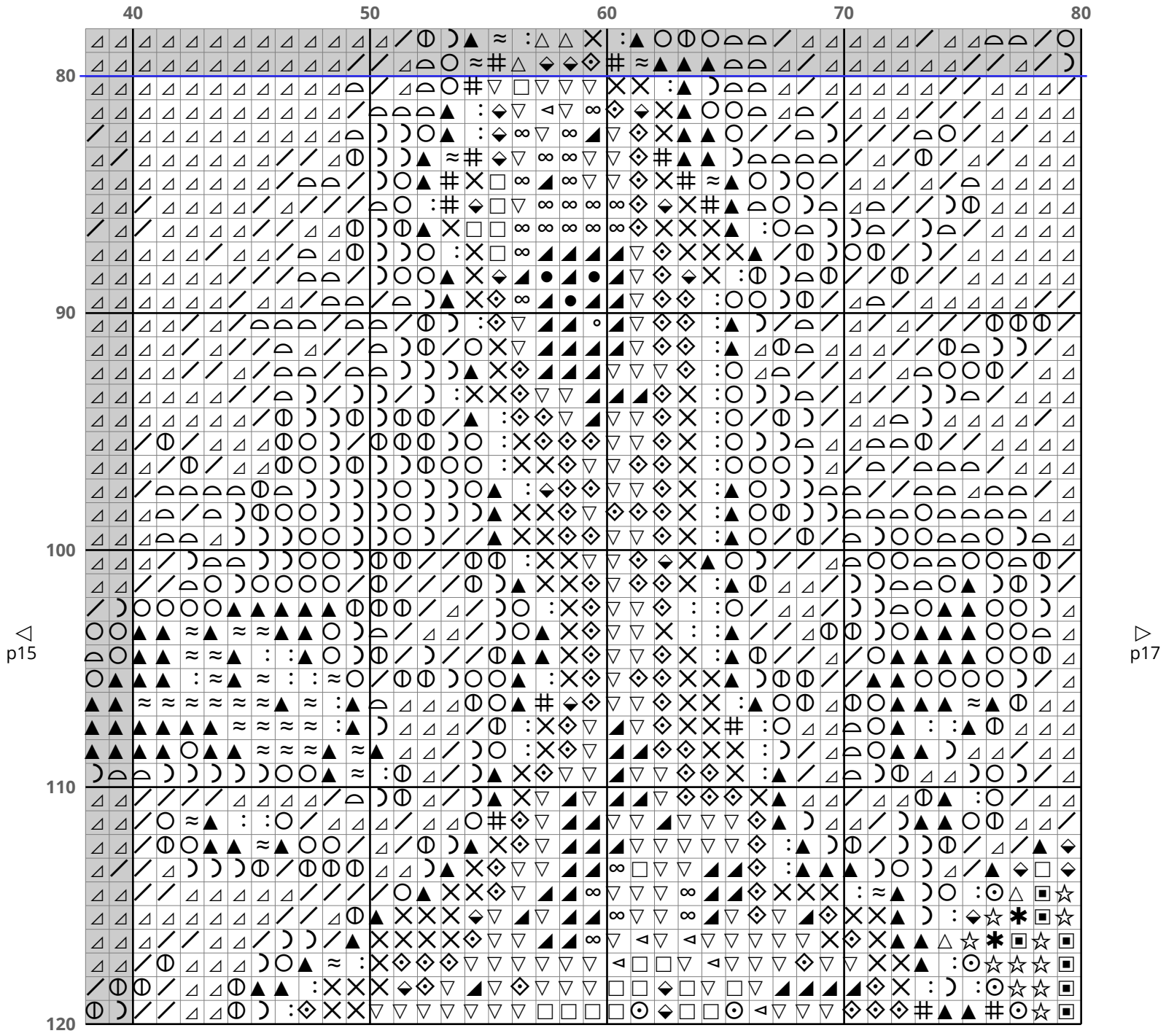
70

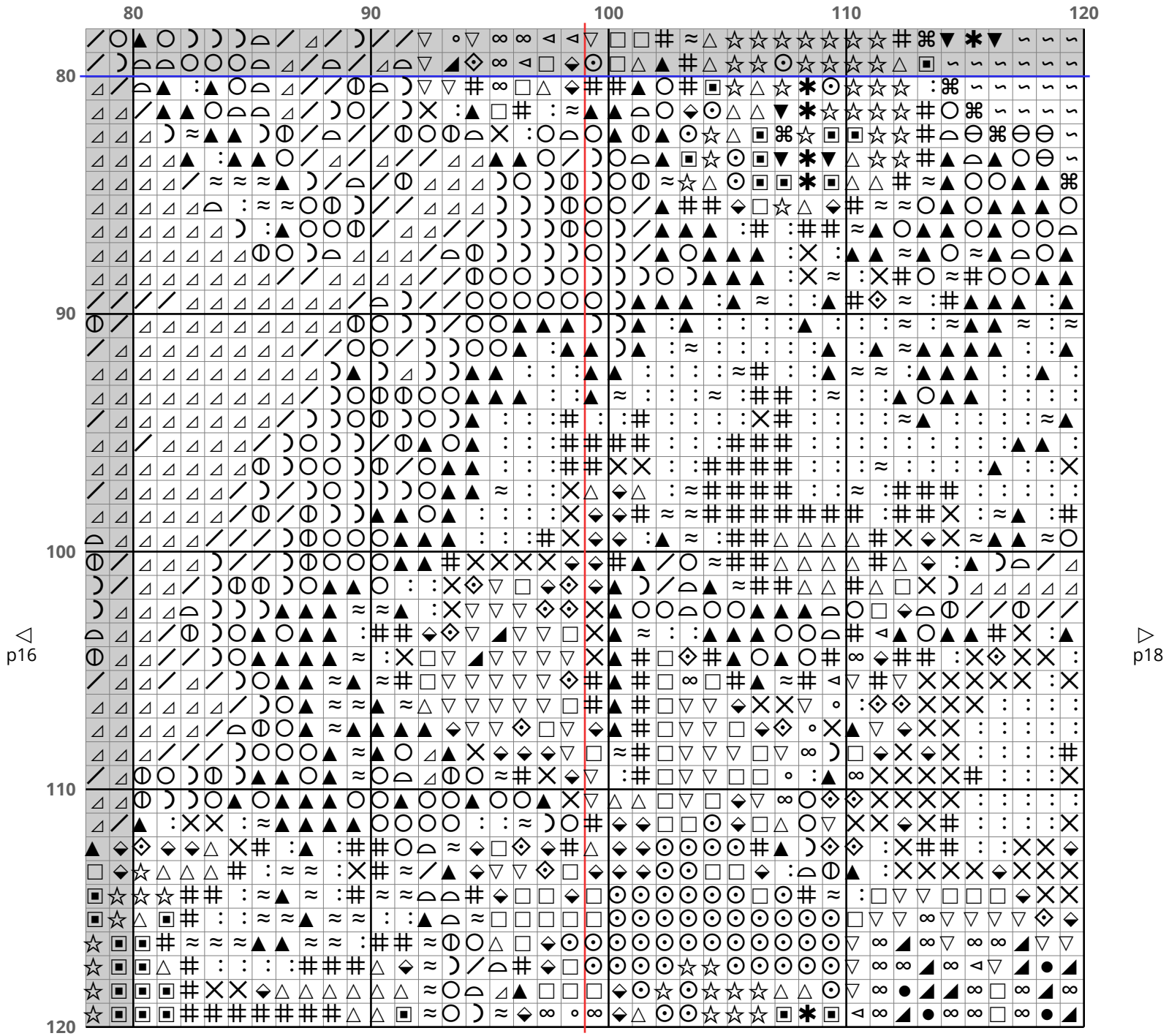
80

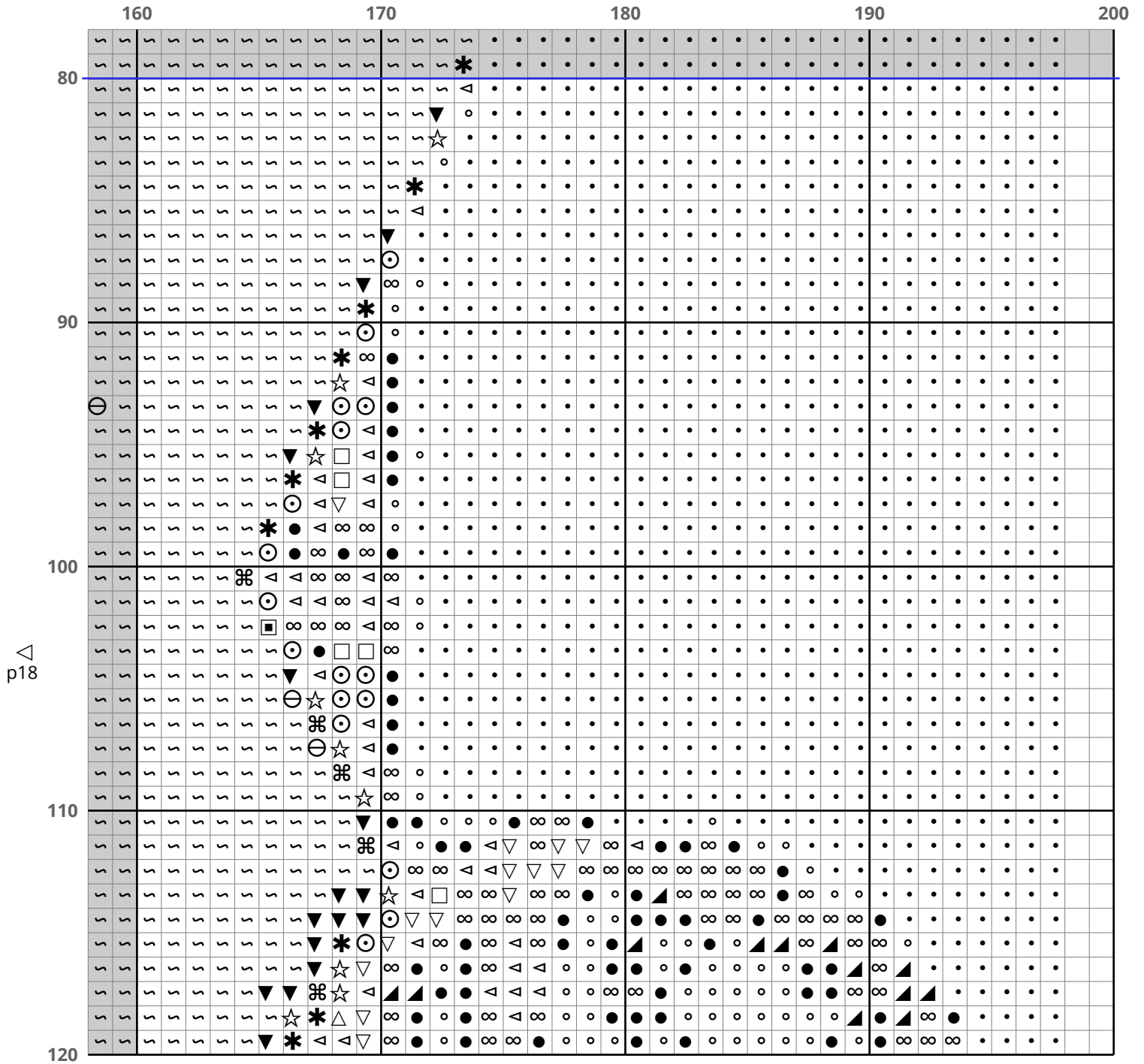
△
p12

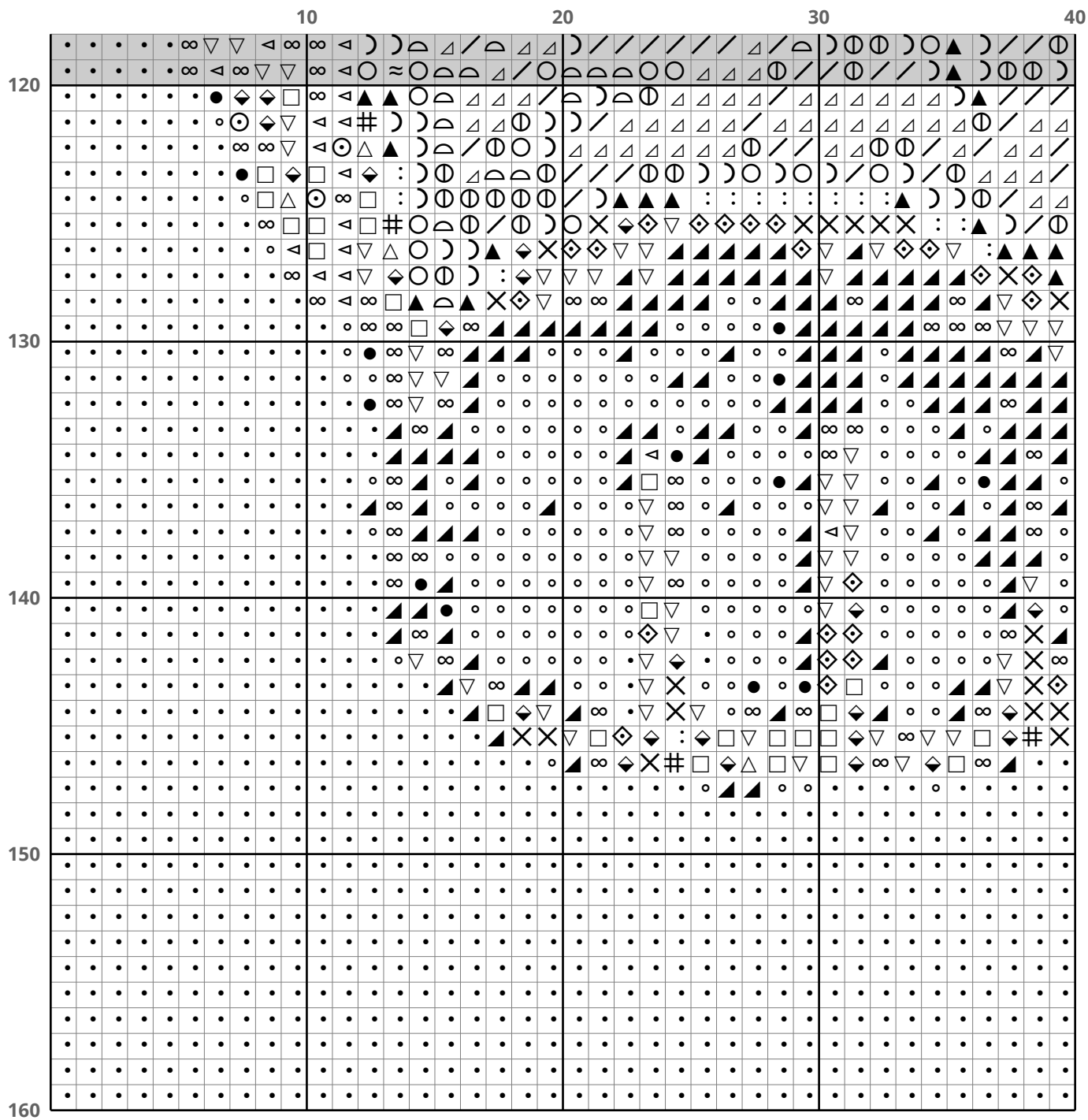
△
p14

	160	170	180	190	200
40	△	△	△	△	△
	△	△	△	△	△
	△	△	△	△	△
	△	△	△	△	△
	△	△	△	△	△
	△	△	△	△	△
	△	△	△	△	△
	△	△	△	△	△
	△	△	△	△	△
	△	△	△	△	△
50	△	△	△	△	△
	△	△	△	△	△
	△	△	△	△	△
	△	△	△	△	△
	△	△	△	△	△
	△	△	△	△	△
	△	△	△	△	△
	△	△	△	△	△
	△	△	△	△	△
	△	△	△	△	△
60	△	△	△	△	△
	△	△	△	△	△
	△	△	△	△	△
	△	△	△	△	△
	△	△	△	△	△
	△	△	△	△	△
	△	△	△	△	△
	△	△	△	△	△
	△	△	△	△	△
	△	△	△	△	△
70	△	△	△	△	△
	△	△	△	△	△
	△	△	△	△	△
	△	△	△	△	△
	△	△	△	△	△
	△	△	△	△	△
	△	△	△	△	△
	△	△	△	△	△
	△	△	△	△	△
	△	△	△	△	△
80	△	△	△	△	△
	△	△	△	△	△
	△	△	△	△	△
	△	△	△	△	△
	△	△	△	△	△
	△	△	△	△	△
	△	△	△	△	△
	△	△	△	△	△
	△	△	△	△	△
	△	△	△	△	△









40

50

60

70

80

120

130

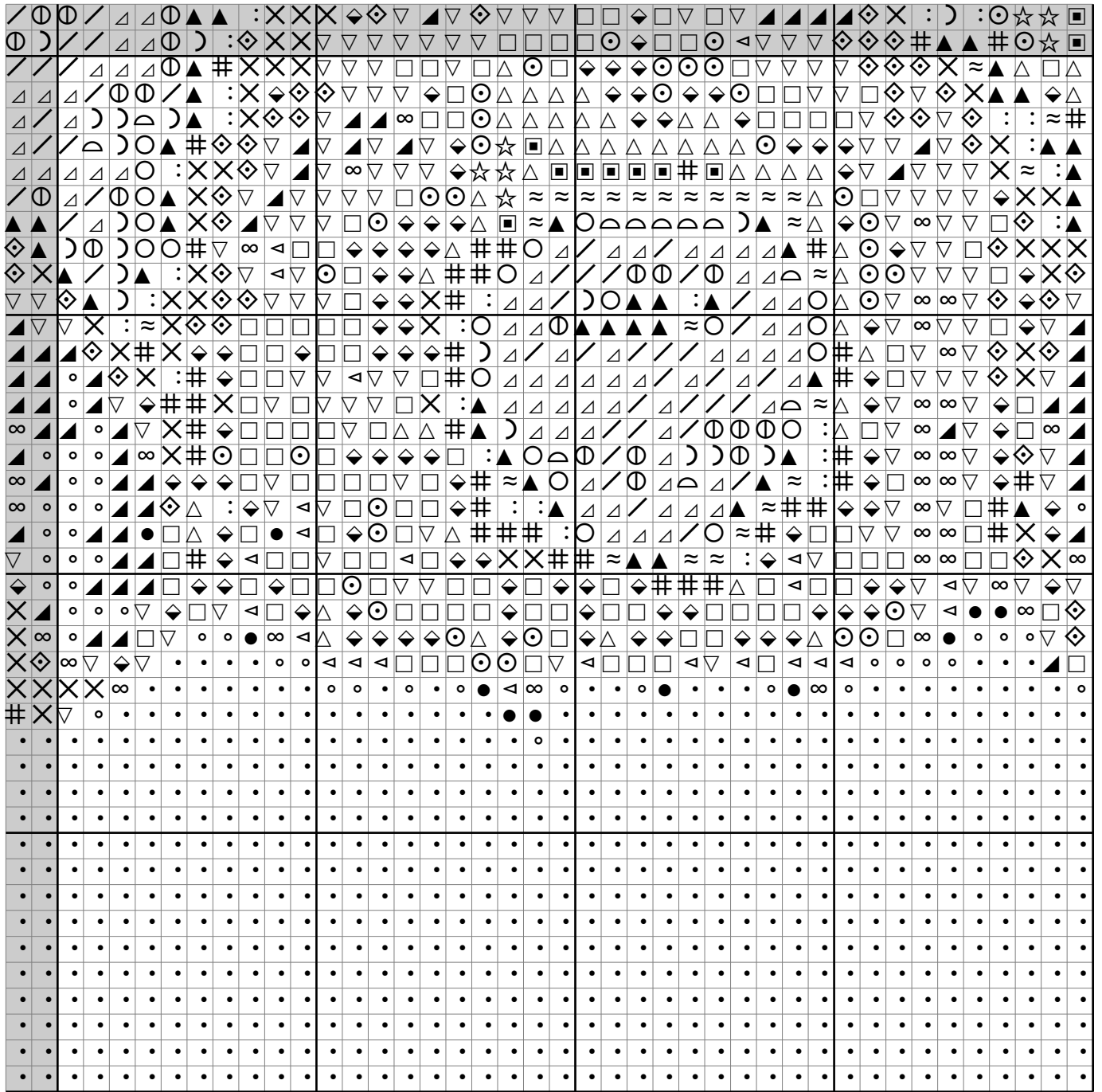
140

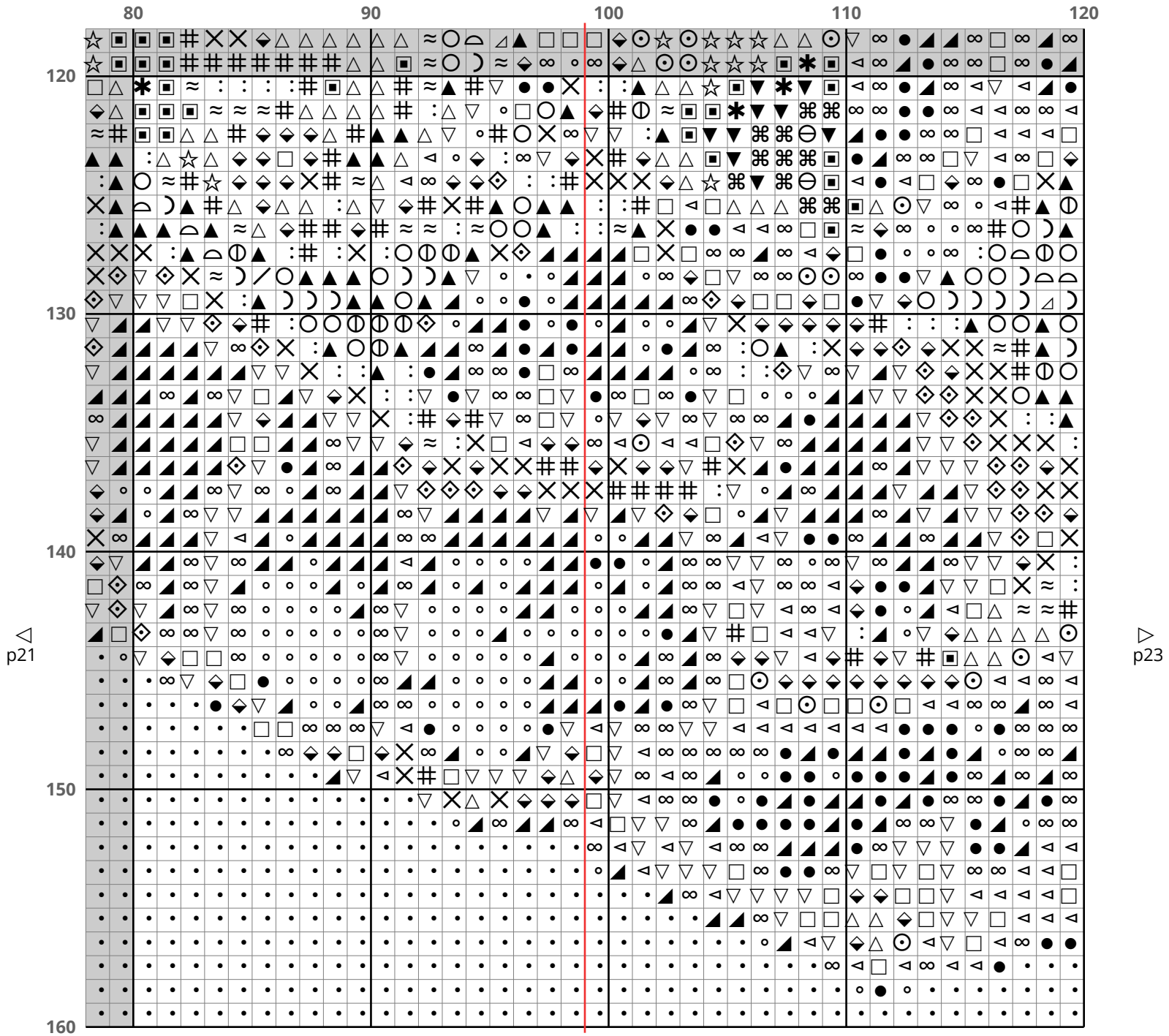
150

160

△
p20

▷
p22





	120	130	140	150	160	
120	▲ 8 8 ▽ ▽ ▲ ▽ ≈ △ ⊙ ▲ ▲ ⊙	▲ ⊙ ⊙ ▲ ▽ ▽ # ⊙ ▲ ⊙ ⊙ ▲ ⊙ ⊙	▲ ⊙ ⊙ ▲ ▽ ▽ # ⊙ ▲ ⊙ ⊙ ▲ ⊙ ⊙	▲ ⊙ ⊙ ▲ ▽ ▽ # ⊙ ▲ ⊙ ⊙ ▲ ⊙ ⊙	▲ ⊙ ⊙ ▲ ▽ ▽ # ⊙ ▲ ⊙ ⊙ ▲ ⊙ ⊙	▲ ⊙ ⊙ ▲ ▽ ▽ # ⊙ ▲ ⊙ ⊙ ▲ ⊙ ⊙
130	▲ ⊙ ⊙ ▲ ▽ ▽ # ⊙ ▲ ⊙ ⊙ ▲ ⊙ ⊙	▲ ⊙ ⊙ ▲ ▽ ▽ # ⊙ ▲ ⊙ ⊙ ▲ ⊙ ⊙	▲ ⊙ ⊙ ▲ ▽ ▽ # ⊙ ▲ ⊙ ⊙ ▲ ⊙ ⊙	▲ ⊙ ⊙ ▲ ▽ ▽ # ⊙ ▲ ⊙ ⊙ ▲ ⊙ ⊙	▲ ⊙ ⊙ ▲ ▽ ▽ # ⊙ ▲ ⊙ ⊙ ▲ ⊙ ⊙	▲ ⊙ ⊙ ▲ ▽ ▽ # ⊙ ▲ ⊙ ⊙ ▲ ⊙ ⊙
140	▲ ⊙ ⊙ ▲ ▽ ▽ # ⊙ ▲ ⊙ ⊙ ▲ ⊙ ⊙	▲ ⊙ ⊙ ▲ ▽ ▽ # ⊙ ▲ ⊙ ⊙ ▲ ⊙ ⊙	▲ ⊙ ⊙ ▲ ▽ ▽ # ⊙ ▲ ⊙ ⊙ ▲ ⊙ ⊙	▲ ⊙ ⊙ ▲ ▽ ▽ # ⊙ ▲ ⊙ ⊙ ▲ ⊙ ⊙	▲ ⊙ ⊙ ▲ ▽ ▽ # ⊙ ▲ ⊙ ⊙ ▲ ⊙ ⊙	▲ ⊙ ⊙ ▲ ▽ ▽ # ⊙ ▲ ⊙ ⊙ ▲ ⊙ ⊙
150	▲ ⊙ ⊙ ▲ ▽ ▽ # ⊙ ▲ ⊙ ⊙ ▲ ⊙ ⊙	▲ ⊙ ⊙ ▲ ▽ ▽ # ⊙ ▲ ⊙ ⊙ ▲ ⊙ ⊙	▲ ⊙ ⊙ ▲ ▽ ▽ # ⊙ ▲ ⊙ ⊙ ▲ ⊙ ⊙	▲ ⊙ ⊙ ▲ ▽ ▽ # ⊙ ▲ ⊙ ⊙ ▲ ⊙ ⊙	▲ ⊙ ⊙ ▲ ▽ ▽ # ⊙ ▲ ⊙ ⊙ ▲ ⊙ ⊙	▲ ⊙ ⊙ ▲ ▽ ▽ # ⊙ ▲ ⊙ ⊙ ▲ ⊙ ⊙
160	▲ ⊙ ⊙ ▲ ▽ ▽ # ⊙ ▲ ⊙ ⊙ ▲ ⊙ ⊙	▲ ⊙ ⊙ ▲ ▽ ▽ # ⊙ ▲ ⊙ ⊙ ▲ ⊙ ⊙	▲ ⊙ ⊙ ▲ ▽ ▽ # ⊙ ▲ ⊙ ⊙ ▲ ⊙ ⊙	▲ ⊙ ⊙ ▲ ▽ ▽ # ⊙ ▲ ⊙ ⊙ ▲ ⊙ ⊙	▲ ⊙ ⊙ ▲ ▽ ▽ # ⊙ ▲ ⊙ ⊙ ▲ ⊙ ⊙	▲ ⊙ ⊙ ▲ ▽ ▽ # ⊙ ▲ ⊙ ⊙ ▲ ⊙ ⊙

△ p22

△ p24

